



ModemUSB/H1.8 (U3G130)

Quick Start Guide v0.5

Thank you for purchasing our device! We hope this feature-packed, user-friendly device will satisfy your expectations. Please take some time to read this Quick Start Guide so as to ensure a trouble-free operation of “ModemUSB/H1.8”. This manual will explain about procedures for proper installation and use of the device.

“ModemUSB/H1.8” is a device designed for data transmission via GSM Network. The user-friendly design allows you to directly connect the device to one of the USB ports of your PC/Notebook. Once a SIM card is inserted into the modem and the device is connected to the PC, you will be able to send SMS, access internet via UMTS/GSM networks (Mobile networks). “ModemUSB/H1.8” supports the following data-bearers: HSDPA, EDGE, GPRS, HSCSD, CSD, and SMS.

CONTENTS OF THE PACKAGE

- 1) "ModemUSB/H1.8"
- 2) USB cable (A jack <-> USB A socket)
- 3) CD (including drivers, "Modem Control Tool" and appropriate documentations)
- 4) Quick Start Guide

Notice: *The SIM card is not included within standard package. You need to obtain it from your local GSM Operator.*

If any of the contents of package are missing, please contact your local representative.

HOW TO START QUICKLY?

Connecting to the PC

Notice: *Whenever the driver installation is being performed, the **modem** should be **unplugged from the PC!***


1. Insert the SIM card into modem as indicated near the SIM card slot. Make sure, the SIM card is pushed in properly.

Notice: *Modem should be **unplugged** from the PC whenever you are **inserting or replacing the SIM card!** When modem is inserted into PC, it is **strictly advised not to remove or replace SIM card**, failing to observe this procedure will result in an **unpredictable behavior** of your PC and Modem.*

2. Plug the USB cable to one of the USB ports of the PC if you are planning to use the cable (do not connect the modem to the PC yet).

Notice: *Modem should be **unplugged** from the PC **only** when it is **disconnected** from the Internet and Modem Control Tool (MCT) is **properly closed**, failing to observe this procedure will result in an **unpredictable behavior** of your PC and Modem.*

INSTALLING "MODEM CONTROL TOOL" AND DRIVERS

1. Insert the CD provided with the "ModemUSB/H1.8" into the CD Drive.
2. Wait until the system displays the navigation window, if the window does not appear, then go to "My computers" double click on the icon of your CD ROM, or right click on the CD ROM explore the CD and click the autorun.exe in the CD.
3. Click on the Install button.
4. The software and drivers will be installed on your PC.
5. Plug the modem (with SIM card inside) into your PC and wait until the operating system detects and assigns the needed drivers. This process may take some seconds
6. Double click the MCT (Modem Control Tool) icon on your desktop: 

SETTING UP AN INTERNET CONNECTION

When using "Modem Control Tool", the Internet connection settings are determined automatically.

Before you begin please make sure that:

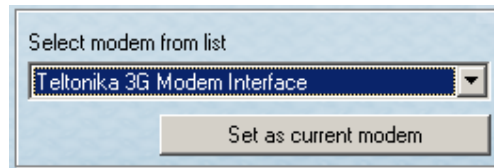
- You have a GSM SIM card with activated data transfer service. Make sure that the PIN code request is disabled or PIN code is properly entered. For more information read the section 4.3 of the user's manual.
- The drivers are installed properly. "ModemUSB/H1.8" is ready with the SIM card pushed in, and the device being properly plugged into the PC.
- Dial-up networking is installed on your PC (OS).
- TCP/IP protocol is installed on your PC (OS).

If all of the above conditions are fulfilled, "ModemUSB/H1.8" will be capable to provide you access to the Internet via one of the following data transmission types:

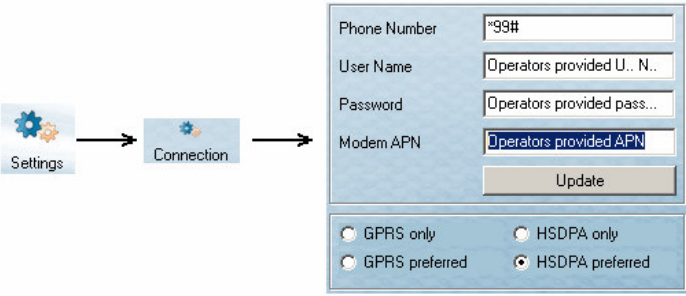
- **HSDPA/EDGE/GPRS** packet data transfer. In this case you have to know APN, User Name and Password. This information should be provided for you by your mobile network operator.
- **HSCSD** or **CSD** data transfer. You have to know a phone number of a dial-up server.

Notice: *APN, User Name and Password should be provided by your mobile network operator*

If the Modem Control Tool is not open, then double click on the MCT icon present on your desktop. If you are using the "ModemUSB/H1.8" for the first time or you have more than one Teltonika modems installed on your PC, you will have to select one of the modems. The latest installed modem will have higher ID after "#" sign. It would be named as: "Teltonika 3G Modem Interface #2" for example. Please choose the needed one and click on "Set as current modem":




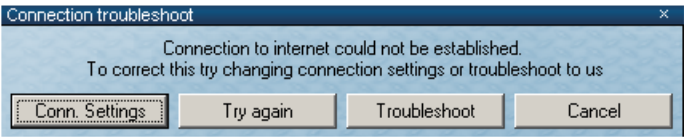


Setting up an Internet connection:

Set up sequence	Screenshots
<ol style="list-style-type: none"> On the main MCT screen click on the Settings → Connection button. Enter the required parameters. Choose your preferred data bearer: HSDPA or GPRS/EDGE. If GPRS is chosen, the connection will be either GPRS or EDGE – depending on the service provided by your mobile network operator. Click on the Update button and close the Configuration tab. 	

GETTING CONNECTED TO THE INTERNET

Before connecting to the Internet, make sure, that the signal indicator located on the right side of the Modem Control Tool program, is at least half-full. Also pay attention to Network indicator which has to be green. If the signal indicator shows low signal – try to place the "ModemUSB/H1.8" higher or closer to the window.

Set up sequence	Screenshots
<ol style="list-style-type: none"> Click on the Connect button in main MCT menu. Its name will be changed into Disconnect, when the modem will be connected to the network. 	 <p>Not connected:  Connected: </p>
<ol style="list-style-type: none"> If there is a problem while connecting to the network, the Connection Troubleshoot menu will appear. First try to solve the problem by pressing Conn. Settings button; it will open the Connection Settings tab. If this does not help, please contact your mobile operator for more information 	

When the Modem is connected to the network – **MCT** looks as shown in the picture below (example):



SENDING SMS

Notice: Please make sure that SMS service is supported by your operator and ensure that SMS centre number is entered.

Procedure for sending SMS:

1. Run "Modem Control Tool"
2. Click "SMS" (Short Messages Service)
3. Enter the recipients phone number
4. Enter the text
5. Click "Send"

Wait for a dialog box, which will inform you if SMS was successfully sent or not.

INDICATION

"ModemUSB/H1.8" has 2 LEDs for indication. Both are located on the side of device. These indicating LEDs will help you determine the operating condition, mode and functionality of the device.

Modem operating modes

Indicators	Description
Indicator „Power“ on	Modem plugged to power supply
Indicator „Status“ blinking	SIM card absent or PIN code is not entered
Indicator „Status“ on	Modem is ready for data transfer

TROUBLESHOOTING

- 1) Problem: "Modem Control Tool" does not detect the modem.
Solution 1: Check if the device is connected to the PC and its "Power" and "Status" LEDs are on.
Solution 2: Reboot the PC.
- 2) Problem: Can't connect to the Internet.
Solution: Check if the correct network parameters are entered and drivers are installed properly.



This sign on the package indicates that, it is necessary to read the User Manual, which is on the CD, or web site (www.teltonika.com), before you start using the device.



This sign on the package indicates that used electronic and electric equipment should be stored separately.

FINAL REMARKS

For further information, please read "ModemUSB/H1.8" Users Manual, on the CD, or on our web site (www.teltonika.com). If you face any problems related to the device, which you are not able to solve by yourself, you are always welcome to address our technical support department by e-Mail support@teltonika.lt. We will be very glad to help you.